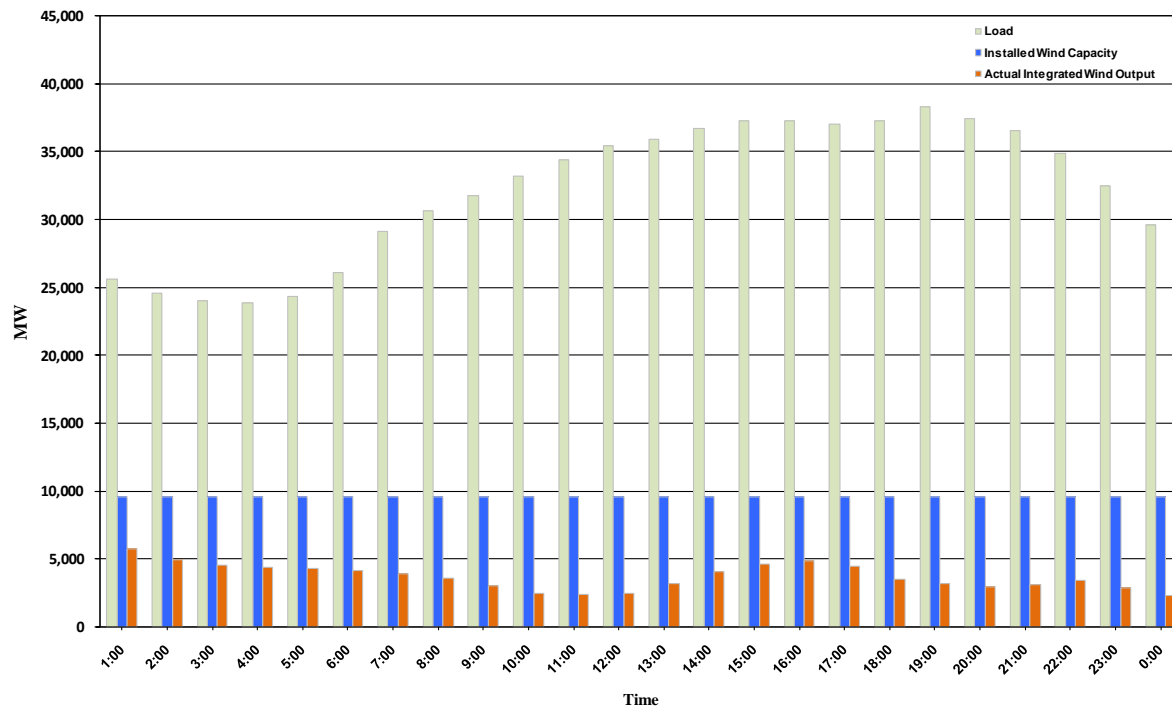




ERCOT Grid Operations Wind Integration Report: 11/22/10

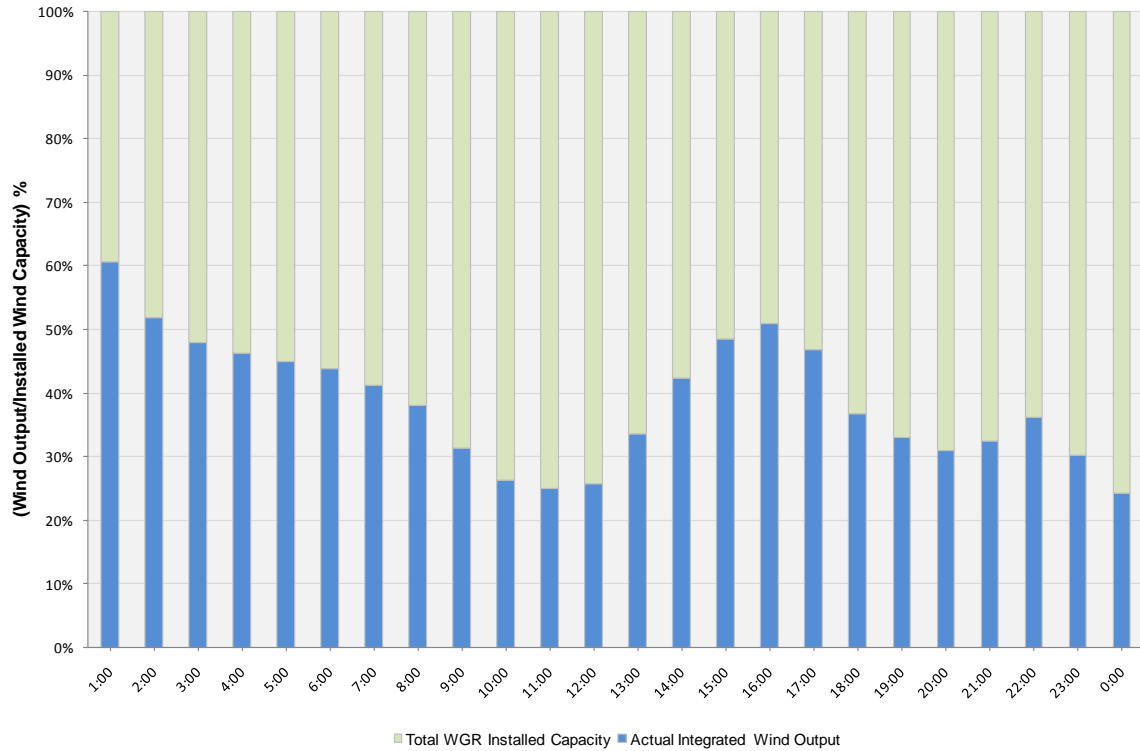
Peak Load	38,308 MW
Load Peak Hour	19
Wind Record 06/12/10	7016 MW
Max Wind value	6255 MW
Wind Peak Hour	00:05:08
Wind Integration %	23.71

Hourly Average Actual Load vs. Actual Wind Output
11-22-2010

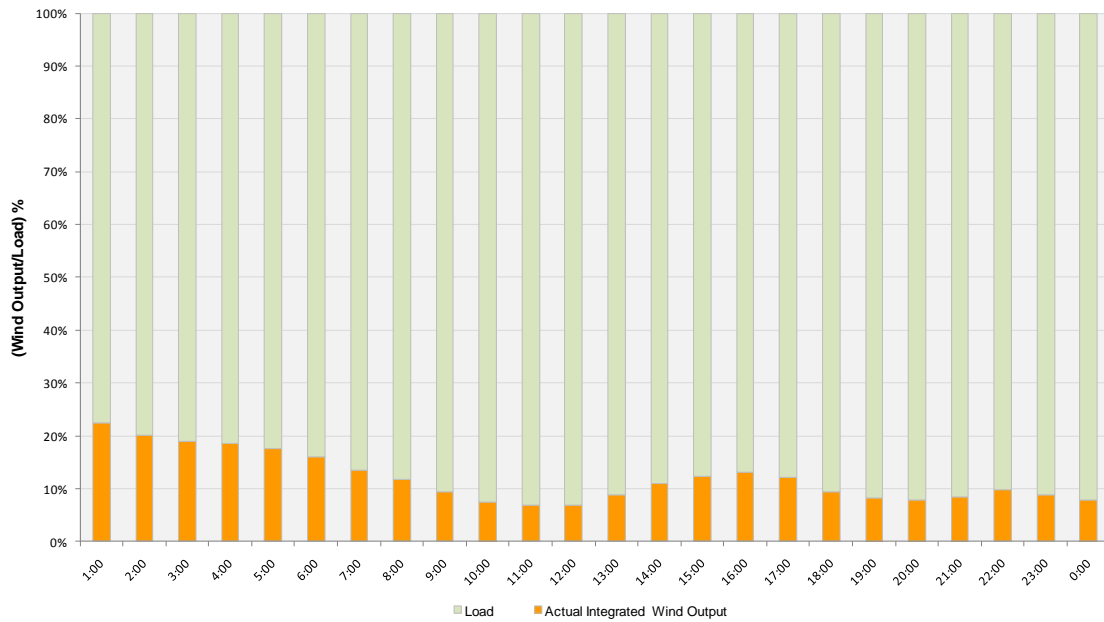




Actual Wind Output as a Percentage of the Total Installed Wind Capacity
11-22-2010



Actual Wind Output as a Percentage of the ERCOT Load
11-22-2010





ERCOT Load vs. Actual Wind Output 11/15/10 - 11/22/10

